

Article No 0001



Venema station

Technical specifications

Machine:	Venema station
Manufacturer:	Venema
Year of construction:	
Quantity:	1 pcs
Description:	Outside is pneumatic probe for beet sampling. Inside the building there is a complete venema laboratory with a process part which includes an input conveyor, gross scale, two beet washers, conveyor with knives for cutting the beet head, net scale, cutter, beet pulp mixer and laboratory part which consists photometer, double beam photometer,

polarizer, acetate scale and a Nirosta
laboratory water device.

Condition:

Used orrect condition

Materijal:

Carbon steel

Article No 0002



Cooling Towers

Technical specifications

Machine:	Cross-flow cooling tower – flow rate 1000 m ³ /h and cooling capacity 23333 kW
Manufacturer:	SPX
Year of construction:	2008.
Quantity:	6 pcs
Remark:	Complete honeycomb or plastic filling together with dropcatchers changed in 2017th.
Materijals:	The load-bearing structure is made of carbon steel and galvanized steel The honeycombs and droppers are made of plastic.

Installed power :	37 kW
Dimension:	19,45 x 7,25 x 6,1 – per tower
Condition:	Used

Article No 0003



Unloading wagons with water

Technical specifications

Machine:	Unloading wagons with water
Manufacturer:	Vam – ing d.o.o.
Year of construction:	2005.
Quantity:	1 pcs
Description:	Two rotating nozzles with complete armature and control box
Capacity:	3 wagons per hour
Condition:	Complete,used and good condition

Article No 0004



Flume waterfilter and separating belt

Technical specifications

Machine:	Flume waterfilter and separating belt for Separating beet particles from water
Manufacturer:	Putsch
Year of construction:	2011.
Quantity:	1 pcs
Description:	The width of the Flume water filter is 7000 mm. The width of the separating belt is 6500 mm Openings on the filter strips are 1 x 10 mm.
Capacity:	For 10000 t beet/day
Condition:	Used

Article No 0005



Elevator

Technical specifications

Machine:	Elevator for lifting beet particles
Manufacturer:	Unknown
Year of construction:	2011. housing made new 2020.
Quantity:	1 pcs
Condition:	Used, correct in good condition
Capacity:	150 t/h sugar beet particle
Dimensions:	16000 x 1070
Maintenance:	A new conveyor belt was installed in 2018. Elevator housing made new 2020. About fifty buckets are replaced every

Article No 0006



Rotary stone catcher

Technical specifications

Machine:	Rotary stone catche
Manufacturer:	Nysia - Polska
Typ:	Sokolov
Year of construction:	1980.
Quantity:	1 pcs
Capacity:	8000 t beet/day
Dimensions:	Φ 3200 Long 4500 + 2000 mm Remark:
mm wide kinet	

For a 1

Article No 0007



Grass catcher on the kinet

Technical specifications

Machine:	Grass catcher
Manufacturer:	
Typ:	With calibrated chain
Year of construction:	1970.
Quantity:	2 pcs
Capacity:	8000 t beet/day
Dimensions:	4300 x 2100 x 1250 mm
Remark:	For a 1000 mm wide kinet
Condition:	Used, functional but not in the best condition
Materijal:	Carbon steel

Article No 0008



Sugar beet conveyer

Technical specifications

Machine:	Conveyer
Manufacturer:	Fleksowel
Typ:	With partitions
Year of construction:	2011.
Quantity:	1 pcs
Capacity:	8000 t beet/day
Dimensions:	Dimensions of load-bearing structure 23000 x 1850
partitions , partition belt changed in 2018	Condition: Used,
Materijal:	Construction karbon steel

Article No 0009



Rollenrost

Technical specifications

Machine:	Rollenrost
Manufacturer:	Butfering
Quantity:	2 pcs

Capacity: 5000 t beet/day
Dimensions: 4700 x 2180
20 axles with discs a total of 630 discs
Remark: All axles with discs on one RR replaced 2019
Condition: Used,
Materijal: Construction karbon steel

Article No 0010



Drum slicer

Technical specifications

Machine:	Beet slicer
Manufacturer:	Putsch
Typ:	TSM 2200-22-600 S
Year of construction:	1999.
Quantity:	1 pcs
Dimensions:	2775 x 2600 x 2610
Capacity:	10000 t beet/day
Weights:	12000 kg
Material:	Carbon steel
Condition:	Used

Article No 0011



Drum slicer

Technical specifications

Machine:	Beet slicer
Manufacturer:	Putsch
Typ:	Φ 2200
Year of construction:	1975.
Quantity:	4 pcs
Dimensions:	Φ2200 height 2830 Capacityy: 3000 t beet/day
Weights:	9700 kg
Material:	Carbon steel
Condition:	Used

Article No 0012



DDS

Technical specifications

Machine:	DDS
Manufacturer:	Nysia - Polska
Typ:	DC12
Year of construction:	1976.
Quantity:	2 pcs
Capacity:	3000 t beet/day
Weights:	264 t
Dimensions:	4000 x 4500 x 23000

Article No 0013



Arc sieves

Technical specifications

Machine:	Arc sievs
Manufacturer:	Bilfinger
Standard:	Johnson Screens RJ
Capacity:	150 m3/h per box
Weights:	
Dimensions:	H x W x L = 2350 x 1500 x 1870
	Slot 1.25mm for a separation 0.75 – 1.0mm particles
Materijal:	Stainless steel grade AISI 316L
Year of construction:	2015.
Quontity:	3 pcs

Article No 0014



Beet pulp presses

Technical specifications

Machine:	Presses
Manufacturer:	Babbini
Typ:	PB32FS 2 pcs
Materijal:	Carbon steel
Year of construction:	2010.
Capacity:	3000 t beet/day

Article No 0015



Stone separator with tank and belt conveyer

Technical specifications

Machine:	Stone separator
Manufacturer:	Unknown
Dimensions of drum:	Φ900 x 4000
Materijal:	Carbon steel
Dimensions of hole on drum:	Φ35 mm
Quantity:	4 pcs

Article No 0016



Stone separator with tank and belt conveyor

Technical specifications

Machine:	Stone separator
Manufacturer:	Unknown
Dimensions of drum:	Φ900 x 4000
Materijal:	Carbon steel
Dimensions of hole on drum:	Φ35 mm

Article No 0017



Horizontal tank with mixer for lime milk

Technical specifications

Machine:	Horizontal tank with mixer
Manufacturer:	Unknown
Dimensions:	2600 x 3700 x 10000 mm V cca 90 m ³ Materijal:
steel	
Quantity:	
1 pcs	
Insulation:	with glass wool 100 mm.
Cover plate:	Al 0.8 mm

Article No 0018



MICK

Technical specifications

Machine:	Devices for extinguishing baked limestone
Manufacturer:	Lior d.o.o.
Remark:	New drums made in 2014 and 2015.
Quantity:	2 pcs

Article No 0019



Gas purifier

Technical specifications

Machine:	Gas purifier
Manufacturer:	Briketstroj d.o.o.
Dimensions:	Height 6200 mm Φ 2800
Material:	Carbon steel
Year of construction:	2010.

Article No 0020

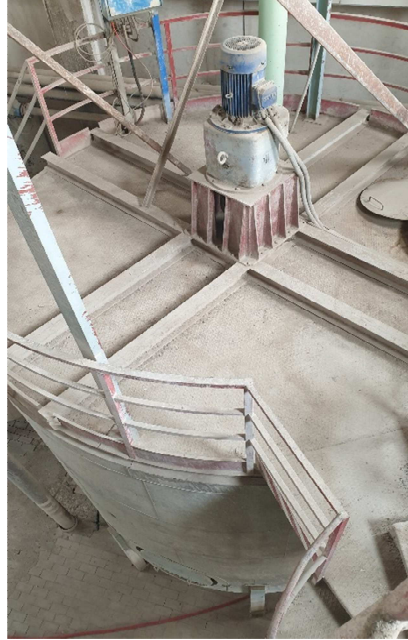


lime kiln extractors

Technical specifications

Machine:	lime kiln extractors
Manufacturer:	Lior Montaža d.o.o.
Dimensions:	Height 6200 mm Φ 2800
Material:	AISI 306 - inox
Year of construction:	2010.
Quantity:	2pcs

Article No 0021



Tank with mixer for filtrate

Technical specifications

Machine:	Tank with mixer
Manufacturer:	Unknovn
Dimensions:	Height 4700 mm , Φ 5600 V= 115 m ³
Material:	Carbon steel
Year of construction:	1990.
Quantity:	1pcs

Article No 0022



Sludge press

Technical specifications

Machine:	Sludge press
Manufacturer:	Putsch
TIP:	PKF 100
Dimensions:	Height 3100 , width 1700, Length 7000
Material:	Carbon steel, plates from polypropylen Dimensions of plates:
1200 x 1200	
Filtration surface:	86,5 m ²
Weight:	10000 kg
Year of construction:	1990.
Quantity:	4 pcs

Article No 0023



Horizontal tank with heater and canopy

Technical specifications

Machine:	Horizontal tank		
Manufacturer:	Vodovod Osijek		
Dimensions:	Lenght 7000 mm	Φ 2000 mm	
	Lenght 9000 mm	Φ 2200 mm	
Materijal:	Carbon steal		Year of construction:
Quantity:	2pcs		

Article No 0024



Pump station

Technical specifications

Machine:	Pumps
Manufacturer:	Warman
Characteristics:	Q=1000m ³ , H= 24,4 m
Height:	3500 mm
Materijal:	Carbon steal
Year of construction:	2017.
Quontity:	3pcs

Article No 0025



Vertikal tank

Technical specifications

Machine:	Verikal tank with mixers
Manufacturer:	Vodovod Osijek
Dimensions:	$\Phi 4700 \times 9000 \ V=43\text{m}^3$
Materijal:	Carbon steal
Year of construction:	2007.
Quantity:	1pcs

Article No 0026

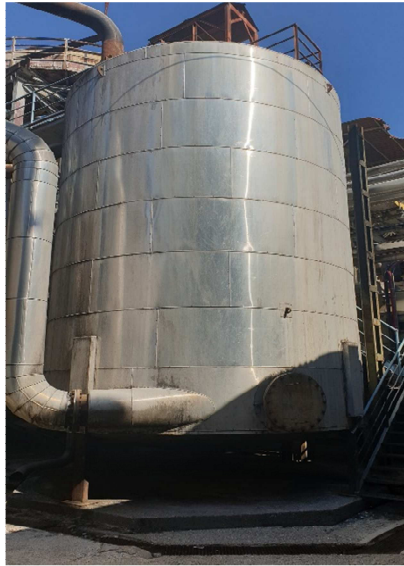


Vertikal tank

Technical specifications

Machine:	Verikal tank with mixers
Manufacturer:	Vodovod Osijek
Dimensions:	$\Phi 3000 \times 5500$ $V = 40 \text{ m}^3$
Materijal:	Carbon steal
Year of construction:	2007.
Quantity:	1pcs

Article No 0027



Vertikal tank

Technical specifications

Machine: Verikal tank with mixers
Manufacturer: Vodovod Osijek
Dimensions: $\Phi 5000 \times 9000$ $V = 170 \text{ m}^3$
Material: Carbon steal
Quantity: 1pcs

Year of construction:

Article No 0028



Horizontal tank with mixer – Brugge Muller

Technical specifications

Machine:	Horizontal tank with mixer
Manufacturer:	Vodovod Osijek
Characteristics:	Six chambers
Dimensions:	
Materijal:	Carbon steal
Year of construction:	1995.
Quantity:	1pcs

Article No 0029



Evaporators

Technical specifications

Machine:	Evaporators
Manufacturer:	Different manufacturers
Heating surface:	From 2000 – 3000 m ²
Typ:	Robert evaporators
Materijal:	Carbon steal - housing Three evaporators have stainless steel heating chambers and the others are made of carbon steel
Insulation:	Ten centimeters of glass wool covered with 0.6mm thick aluminum sheet
Year of construction:	1977.
Quantity:	10 pcs

Article No 0030



Saturaters

Technical specifications

Machine:	Saturaters
Manufacturer:	Vodovod Osijek
Typ:	With cleaners – richters
	First saturation two pieces an second one piece
Saturater 1A	200 m ³
Saturater 1B	100 m ³
Saturater 2	100 m ³

Insulation:	Eight centimeters of glass wool covered with 0.6mm thick aluminum sheet
Materijal:	Carbon steal
Year of construction:	2007, 2008.
Quantity:	3 pcs

Article No 0031



DDS filters

Technical specifications

Machine:	DDS filter
Manufacturer:	DDS
Dimensions:	2800 x 2800 x 2400 mm V=8 m ³
Filtration area:	51 m ²
Materijal:	Carbon steal
Insulation:	Eight centimeters of glass wool covered with 0.6mm thick aluminum sheet
Remark:	2012 – 2013 replaced housings and support rails
Quantity:	6 pcs

Article No 0032



CO2 compressors

Technical specifications

Machine:	CO2 compressor	CO2 compressor
Manufacturer:	Siemens	Litostroj
Typ:	LP650	OBD 70 - K
Characteristics:	Q=330 m ³ /h, H= 9m	Q=4620 m ³ /h, H= 9m
Year of construction:	1965.	1970,1977,1974.
Quantity:	3pcs	3 pcs
Materijal:	Carbon steal	

Article No 0033



Vacuum pumps

Technical specifications

Machine:	Vacuum pump
Manufacturer:	Dik Đurđenovac
Typ:	J 46
Year of construction:	1956 - 1966.
Quantity:	5pcs
Materijal:	Carbon steal

Article No 0034



Plate heat exchangers

Technical specifications

Machine:	Plate heat exchangers	heating area
Manufacturer:	IPROS d.o.o.	
Typ:	NT 150S V-44/CD-10	22 m ²
	NF 350 H-306/B-6	594 m ²
	NF 350 H-164/B-6	2 pcs 310 m ²
	NF 350 H - 130/ B-6	249 m ²
	FA 184K B-6	111 m ²
	VT 80 H-300/ B-10	2 pcs 250 m ²
	VT 80-H - 100/CDL - 10	163 m ²
	VT 80/B-6	216 m ²
	VT 80 VL B-6	167 m ²

	VT 80-HL-106/CDL-10	87 m ²
	VT 80 VL /CDL-6	66 m ²
	VT -40 V-48/CDS-10	21 m ²
	VT 40 VL/CDL-10	32 m ²
	VT 40 H - 68/CDS-10	30 m ²
Manufacturer:	Alfa laval	
Typ:	M-20 MFM	304 m ²
Materijal:	Housing - Carbon steal Plates - inox	
Year of construction:	2007 – 2019.	
Quantity:	18 pcs	

Article No 0035



Plate heat exchangers

Technical specifications

Machine:	Plate heat exchangers
Manufacturer:	Barriquand
Typ:	DIXASP 21 + 2*20/10*6*4500*981
Remark:	Welded design of plates
Heating area:	503 m ²
Year of construction:	2019.
Quantity:	1 pcs

Article No 0036



Vacuum pans

Technical specifications

Machine:	Vacuum pans	
Manufacturer:	Different manufacturers	
Typ:	Chamber with pipes $\Phi 100$	
Materijal:	Housing - Carbon steel	
Capacity:	60 t with inox heating chambers	4 pcs
	50 t with inox heating chambers	2 pcs
	60 t with carbon steel heating chambers	7 pcs
	37 t with carbon steel heating chambers	2 pcs
	40 t with carbon steel heating chambers	1 pcs

Remark:	All vacuum pans have two – speed mixers, Stelzer, vacuum and discharge automatic butterfly valves In 2011, the heating chambers on the vacuum pans were replaced, new mixers were installed and the complete insulation, 10 cm, was replaced.
Year of construction:	2011.
Quantity:	16 pcs

Article No 0037



Tanks for sirup

Technical specifications

Machine:	Tanks
Manufacturer:	Different manufacturers
Position:	Verical and horizontal
Materijal:	Carbon steal
Insulation:	Eight centimeters of glass wool covered with 0.6mm thick aluminum sheet
Dimensions:	V1= 40m ³ , V2=40m ³ ,V3=22m ³ , V4=35m ³ ,V5=25 ³ V6= 40m ³ , V7=22m ³ , V8=22m ³
Quantity:	9 pcs

Article No 0038



Beutels

Technical specifications

Machine:	Filters for standard sirup
Manufacturer:	Putsch
Materijal:	INOX
Typ:	Bag filters with openings 50 micrometers
Remark:	Each beutel has 8 bag filters
Quantity:	4 pcs

Article No 0039



Horizontal coolers with mixer

Technical specifications

Machine:	Horizontal coolers
Manufacturer:	Jedinstvo
Typ:	Horizontal
Materijal:	Housing - Carbon steal
Dimensions:	2250 x 2400 x 7200 8 pcs
	2950 x 2700 x 8000 5 pcs
	2600 x 2700 x 8500 2 pcs
	2950 x 2700 x 8000 2 pcs
Insulation:	Eight centimeters of glass wool covered with 0.6mm thick aluminum sheet
Quantity:	17 pcs

Article No 0040



Batch centrifuges – for „A“ produkt

Technical specifications

Machine:	Batch centrifuges
Manufacturer:	Silwer weibull
Typ:	2000/S
Materijal:	Carbon steel

Capacity:	1352 l/ charging 1600 t white sugar/24 h 4 pcs
Year of construction:	2003.
Overhaul :	In 2018, one centrifuge drum was replaced, materijal stainless steel. 2019 the other three drums were replaced, materija lhardox
Quontity:	4 pcs

Article No 0041



Continuous centrifuge „C“ produkt

Technical specifications

Machine:	Centrifuge
Manufacturer:	BWS
Typ:	Continuous SC1100K
Materijal:	INOX
Dimensions:	H=1420mm, Φ 1800
Capacity:	10 – 14 t/h
Year of construction:	
Quantity:	3 pcs

Article No 0042



Continuous centrifuge "C" produkt

Technical specifications

Machine:	Centrifuge
Manufacturer:	BMA
Typ:	Continuous, K1500
Materijal:	Carbon steel
Dimensions:	H=1325 , Φ 2350
Capacity:	6 – 10 t/h
Year of construction:	
Quontity:	2 pcs

Article No 0043



Molasses scale with tank

Technical specifications

Machine:	Scale with tank
Manufacturer:	Lior Montaža d.o.o.
Materijal:	INOX
Dimensions:	
Capacity:	One ton per batch
Year of construction:	2007.
Quantity:	1 pcs

Article No 0044



Aspiration

Technical specifications

Machine:	Aspiration
Manufacturer:	Sop Krško
Materijal:	Carbon steel
Air volume:	10800 m ³ /h
Total pressure:	2452 Pa
Year of construction:	1978.
Quantity:	2 pcs

Article No 0045



Compressors

Technical specifications

Machine:	Air compressor		
Manufacturer:	Boge		
Typ and capacity:	S100	12,1 m ³ /min	3 pcs
	S60 - 2	6,34 m ³ /min	3 pcs
	S50	6,34 m ³ /min	1 pcs
	S30	3,6 m ³ /min	1 pcs
Working pressure:	8 bar		
Materijal:	Carbon steel		
Year of construction:	2007.		
Quantity:	8 pcs		

Article No 0046



Compressors

Technical specifications

Machine:	Air compressor
Manufacturer:	Atlas Copco
Typ:	GA 810 A
Capacity:	9,42m ³ /min
Working pressure:	10 bar
Materijal:	Carbon steel
Quantity:	3 pcs

Article No 0047



Air compresor

Technical specifications

Machine: RKL-3
el.motor Sever 7,5kW; 2860rpm

Manufacturer: Tvornica strojeva DIK-a Đurđenovac

Year of construction: 1988

Quantity: 2 piece(s)

Article No 0048



Air compresor

Technical specifications

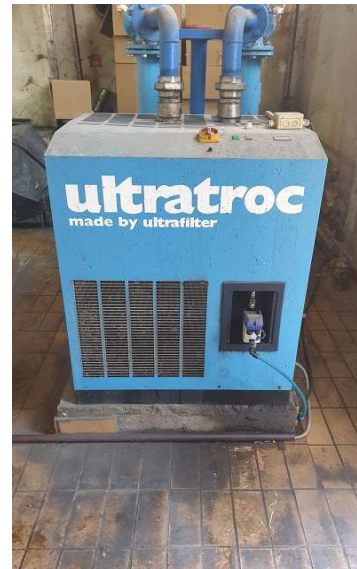
Machine: typ SCK 15-10
Q=1,5m³/min; el.motor 11kW; 3000rpm

Manufacturer: ALUP

Year of construction: 2004

Quantity: 2 piece(s)

Article No 0049



Air dryers

Technical specifications

Machine:	Air drayers
Manufacturer:	Ultratroc
Model:	SD 1175
Typ:	421
Materijal:	Carbon steel
Year of construction:	2010.
Quantity:	1 pcs

Article No 0050



Compressed air dryer

Technical specifications

Machine: typ DEiT 050
Q=300m³/h

Manufacturer: DEiTECH

Year of construction: 2017

Quantity: 1 piece(s)

Article No 0051



Compressed air tanks

Technical specifications

Machine:	Tanks
Manufacturer:	Various
Materijal:	Carbon steel
Remark:	All tanks have valid certificates
Year of construction:	1980 - 1995.
Quantity:	7 pcs

Article No 0052



Sugar packing machine 1 kg

Technical specifications

Machine:	Sugar packing machine
Manufacturer:	Fawema
Typ:	FA35.2/Z
Capacit:	60 kg/min
Year of construction:	2002.
Quantity:	1 pcs

Article No 0053



Sugar packing machine 1000 – 1200 kg

Technical specifications

Machine:	Sugar packing machine
Manufacturer:	Libela Elsi
Typ:	BB.4D.3T/1200
Capacit:	15 - 20 bags / h per filler with filling 500 - 1200 kg
Year of construction:	2007.
Quantity:	2 pcs

Article No 0054



Sugar packing machine 25 - 50 kg

Technical specifications

Machine:	Sugar packing machine
Manufacturer:	Technipes
Typ:	4 TE.2/25 G + 4 ITN + 4 TRANSFER-R + ET2
Capacit:	1100 - 1200 bags / h
Year of construction:	2015.
Quantity:	1 pcs

Article No 0055



Palletizer

Technical specifications

Machine:	Palletizer
Manufacturer:	IMP.A.C.
Typ:	IMP.A.C.BR/4A
Capacit:	40 t/h
Year of construction:	2015.
Quantity:	1 pcs

k

Article No 0056



A device for loading sugar into truck tanks

Technical specifications

Machine:	For loading sugar into truck tanks
Manufacturer:	Stanelle
Typ:	JMB 220 QUADRO 6 B
Year of construction:	2015.
Quantity:	1 pcs

Article No 0057



Chemical preparation plant

Technical specifications

Machine: Ion exchangers
Decarbonation line 1x80m³/h; Demineralization line 2x30m³/h

Manufacturer: MIN Niš

Year of construction: 1987

Quantity: 2 piece(s)

Article No 0058



Acid (HCl) tank

Technical specifications

Machine: Polyester acid (HCl) tank 15m³

Manufacturer: Lepoglavec, Bjelovar

Year of construction: 2020

Quantity: 1 piece(s)

Article No 0059



Alkali (NaOH) tank

Technical specifications

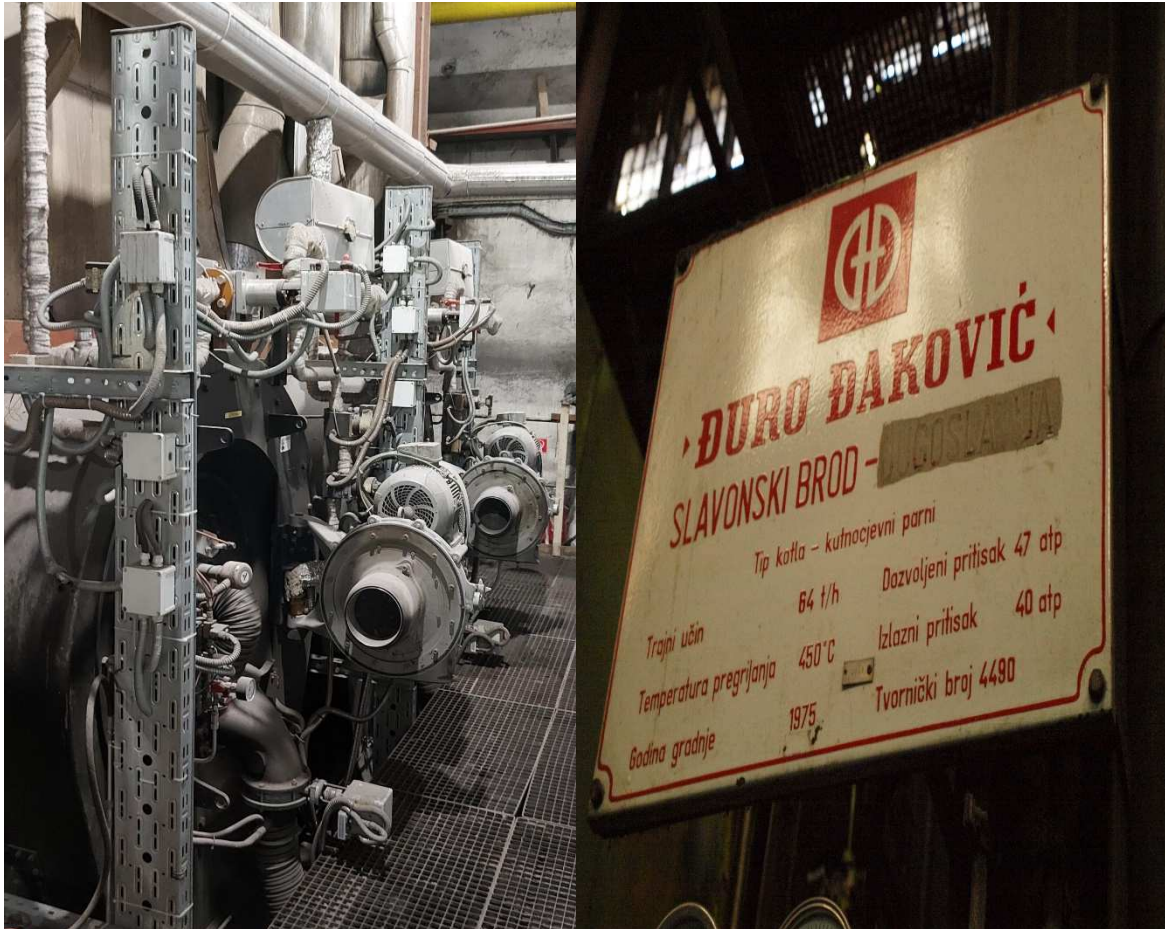
Machine: Steel alkali (HCl) tank 15m³

Manufacturer: MIN Niš

Year of construction: 1987

Quantity: 1 piece(s)

Article No 0060



Steam boiler

Technical specifications

Machine: Steam boiler for superheated steam, pressure 40bar, temp. 450stC
Combined burner Gas/Oil Saacke SKV 300 27MW (2 pieces installed 2018.)

Manufacturer: Đuro Đaković

Year of construction: 1975.

Quantity: 1 piece(s)

Article No 0061



Water tank

Technical specifications

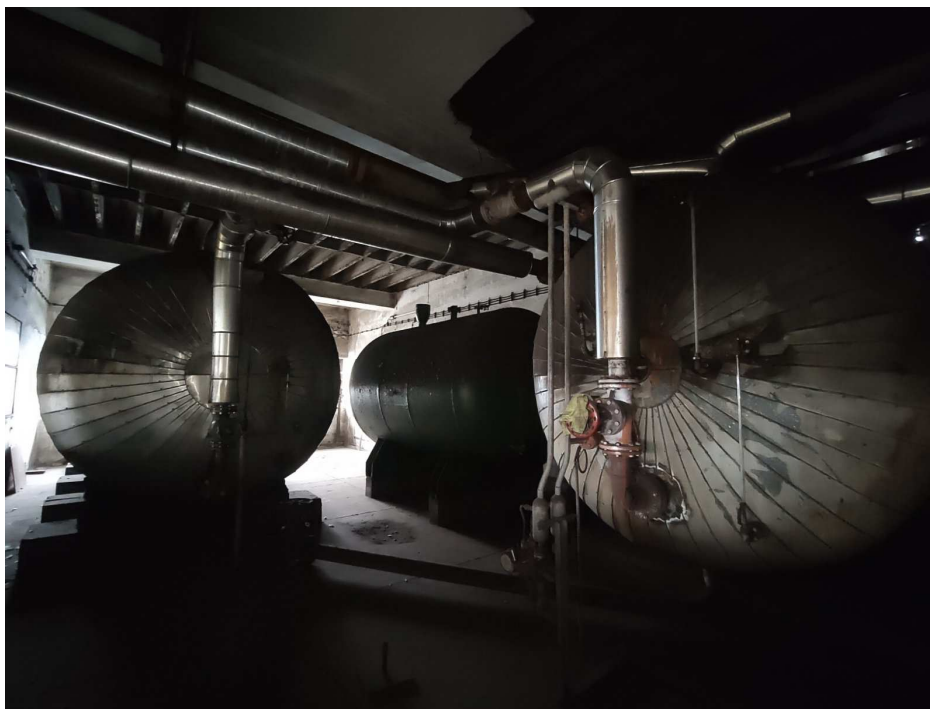
Machine: Water tank, dimensions: fi2400x4750mm, black steel

Manufacturer: Đuro Đaković

Year of construction: 1957

Quantity: 1 piece(s)

Article No 0062



Water tank

Technical specifications

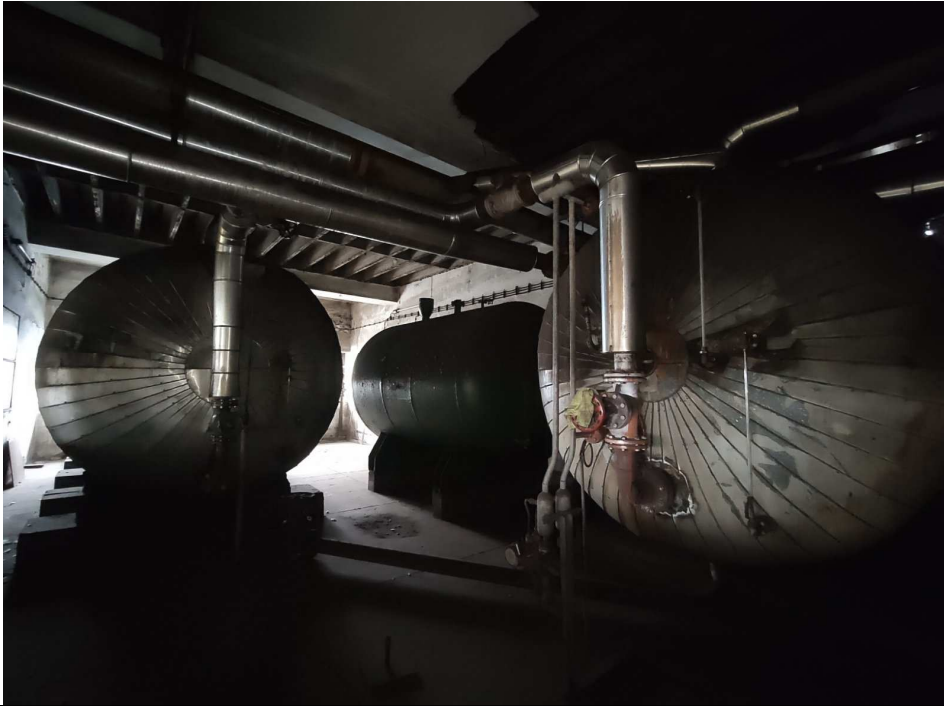
Machine: Water tank, dimensions: fi2400x6800mm with deareator, black steel

Manufacturer: Đuro Đaković

Year of construction: 1957

Quantity: 1 piece(s)

Article No 0063



Water tank

Technical specifications

Machine: Water tank, dimensions: fi2400x6800mm with deareator, black steel

Manufacturer: Đuro Đaković

Year of construction: 1957

Quantity: 1 piece(s)

Article No 0064



Water tank

Technical specifications

Machine: Water tank, dimensions: fi2500x7060mm (50m³), black steel

Manufacturer: Đuro Đaković

Year of construction: 1978

Quantity: 1 piece(s)

Article No 0065



Water tank

Technical specifications

Machine: Water tank, dimensions: $\varnothing 3000 \times 8500$ mm (75m³) with deareator, black steel

Manufacturer: Đuro Đaković

Year of construction: 1978

Quantity: 1 piece(s)

Article No 0066



Water tank

Technical specifications

Machine: Water tank, dimensions: $\varnothing 2500 \times 7090$ mm (30m³) with deareator, black steel

Manufacturer: Đuro Đaković

Year of construction: 1971

Quantity: 3 piece(s)

Article No 0067



Water tank

Technical specifications

Machine: Water tank, dimensions: fi2500x7090mm (30m³), black steel

Manufacturer: Đuro Đaković

Year of construction: 1971

Quantity: 1 piece(s)

Article No 0068



Water tank

Technical specifications

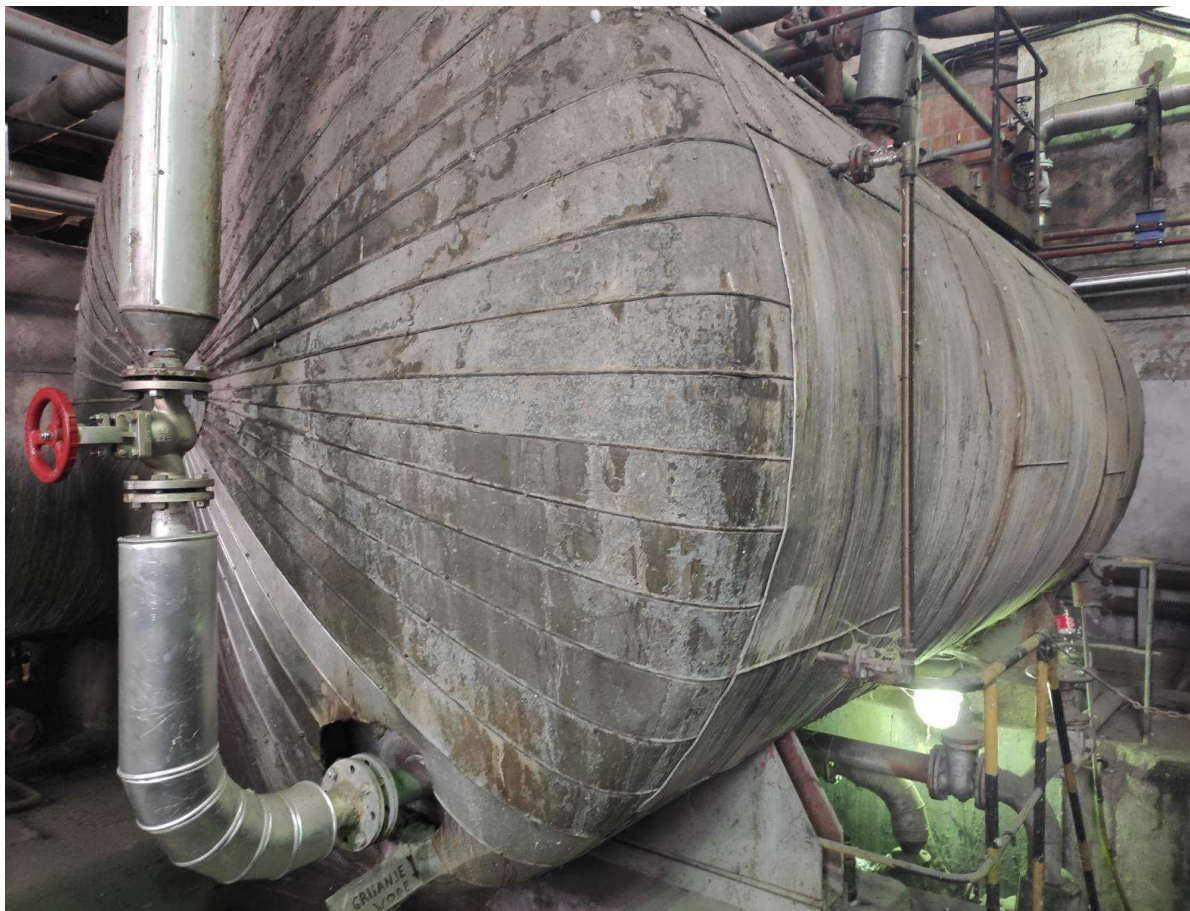
Machine: Water tank, dimensions: fi2500x7200mm (30m³), black steel

Manufacturer: Đuro Đaković

Year of construction: 1980

Quantity: 1 piece(s)

Article No 0069



Water tank

Technical specifications

Machine: Water tank, dimensions: fi2500x6400mm , black steel

Manufacturer: Đuro Đaković

Year of construction: 1980

Quantity: 1 piece(s)

Article No 0070



Cooler tower

Technical specifications

Machine: Cooler tower AT-28-4L28, capacity: 2.000kW
Fan 2 x 18,5kW; Pump cold water 2x30kW; Pump hot water 2x30kW

Manufacturer: Evapco

Year of construction: 2016

Quantity: 1 piece(s)

Article No 0071



Portal crane

Technical specifications

Machine: Portal crane, Q=5,5t
El.motor 3x35kW; 1x11kW

Manufacturer: Đuro Đaković

Year of construction: 1958

Quantity: 1 piece(s)

Article No 0072



Furnace for sugar beet pulp drying

Technical specifications

Machine: Furnace for noodle drying , drum dim. fi2600x16000
Oil burner (2 pieces)
Furnace capacity: 2,5t/h dry noodle

Manufacturer: Jedinstvo Zagreb

Year of construction: 1963

Quantity: 1 piece(s)

Article No 0073



Furnece for sugar beet pulp drying

Technical specifications

Machine: Furnece for noodle drying, drum dim.: fi2600x14000
Gas burner (2 pieces) Weishaupt RGSM 70/1-A 2x8,5MW
Furnace capacity: 3,2t/h dry noodle

Manufacturer: K.H.Paul-Ludwig Neuss

Year of construction: 1959.

Quantity: 1 piece(s)

Article No 0074



Furnace for sugar beet pulp drying

Technical specifications

Machine: Furnace for noodle drying typ-25, drum dim. fi4300x18000
Gas burner Saacke SKVG-250 26MW
Furnace capacity: 6,25t/h dry noodle

Manufacturer: Liegende Olfeuerun

Year of construction: 1969

Quantity: 1 piece(s)

Article No 0075



Output fan of furnace sugar beet pulp drying

Technical specifications

Machine: Fan typ WPWD 140/1,4, 595rpm, el.motor Sever 2ZPT400L10 160kW

Manufacturer: Fabryka wentylatorow Chelm Slaski

Year of construction: 1977

Quantity: 1 piece(s)

Article No 0076



Cyclone separator

Technical specifications

Machine: Cyclone separator dim. fi4000x14000

Manufacturer: -

Year of construction: 1969

Quantity: 2 piece(s)

Article No 0077



Cyclone separator

Technical specifications

Machine: Cyclone separator dim. fi3500x17000

Manufacturer:

Year of construction: 1969

Quantity: 2 piece(s)

Article No 0078



Kahl pellet press

Technical specifications

Machine: Pellet press typ 39-1000 (maschine number 17.124, 17.125)

El.motor 200kW

Manufacturer: Amandus Kahl

Year of construction: 1998

Quantity: 2 piece(s)

Article No 0079



Kahl pellet press

Technical specifications

Machine: Pellet press typ 40-1000 (machine number 12.918)

Manufacturer: Amandus Kahl

Year of construction: 1998

Quantity: 1 piece(s)

Article No 0080



Generator 12,5MVA

Technical specifications

Machine: Three-phase synchronous generator 12,5MVA, rated voltage:6300V

Manufacturer: Rade Končar

Year of construction: 1980

Quantity: 1 piece(s)

Article No 0081



Generator 7,5MVA

Technical specifications

Machine: Three-phase synchronous generator 7,5MVA, rated voltage: 6300V

Manufacturer: Rade Končar

Year of construction: 1980

Quantity: 1 piece(s)

Article No 0082



Generator 3,6MVA

Technical specifications

Machine: Three-phase synchronous generator 3,6MVA, rated voltage: 6300V

Manufacturer: Rade Končar

Year of construction: 1980

Quantity: 1 piece(s)

Article No 0083



Turbine 10MW

Technical specifications

Machine: Counterpressure steam turbine 10MW, Pressur:40bar, temp. 410stC, 3000rpm

Manufacturer: Jugoturbina

Year of construction: 1979

Quantity: 1 piece(s)

Article No 0084



Turbine 6MW

Technical specifications

Machine: Counterpressure steam turbine 6MW, Pressur:40bar, temp. 410stC, 3000rpm

Manufacturer: Jugoturbina

Year of construction: 1969

Quantity: 1 piece(s)

Article No 0085



Turbine 2,5MW

Technical specifications

Machine: Counterpressure steam turbine 2,5MW, Pressur:40bar, temp. 410stC, 3000rpm

Manufacturer: Jugoturbina

Year of construction: 1958

Quantity: 1 piece(s)

Article No 0086



Energy transformer

Technical specifications

Machine: Transformator 35/6,3kV 2500kVA
Typ 4JB 6480-9ZJ05

Manufacturer: Siemens Tunorma

Year of construction: -

Quantity: 2 piece(s)

Article No 0087



Energy transformer

Technical specifications

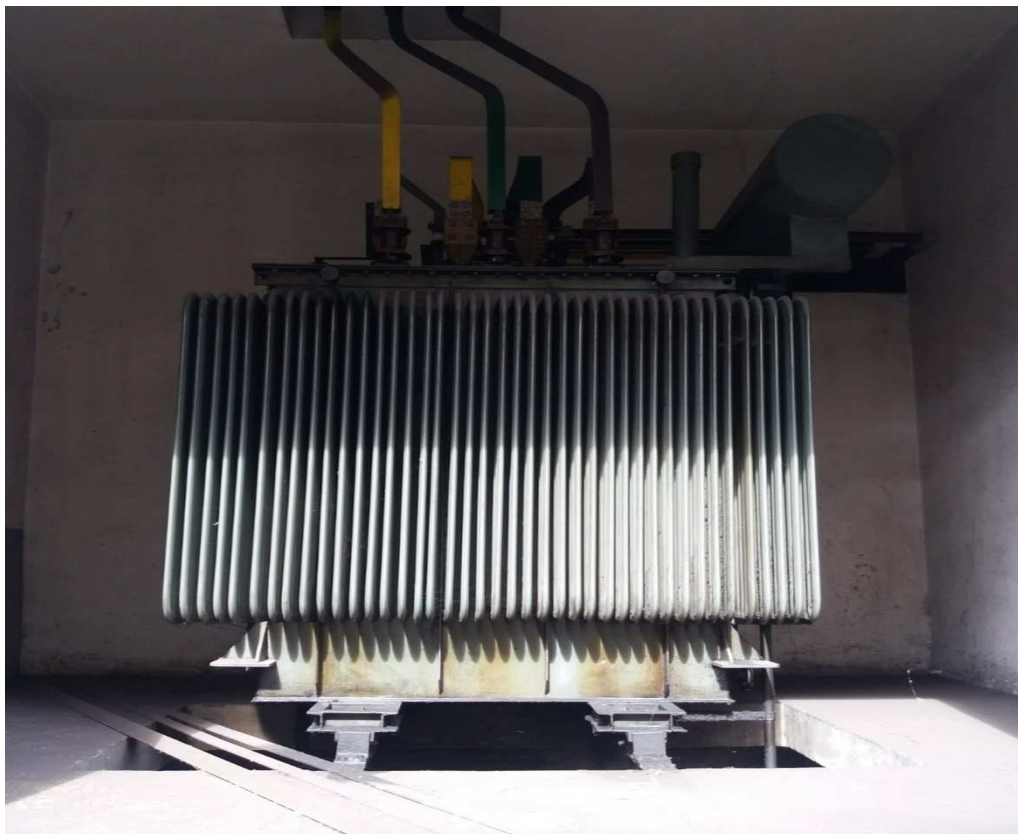
Machine: Transformator 35/6,3kV 1600kVA
3TNp30-35

Manufacturer: Končar

Year of construction: -

Quantity: 1 piece(s)

Article No 0088



Energy transformer

Technical specifications

Machine: Transformator 6,3/0,4kV 1600kVA

Manufacturer: Končar

Year of construction: -

Quantity: 12 piece(s)

Article No 0089



Energy transformer

Technical specifications

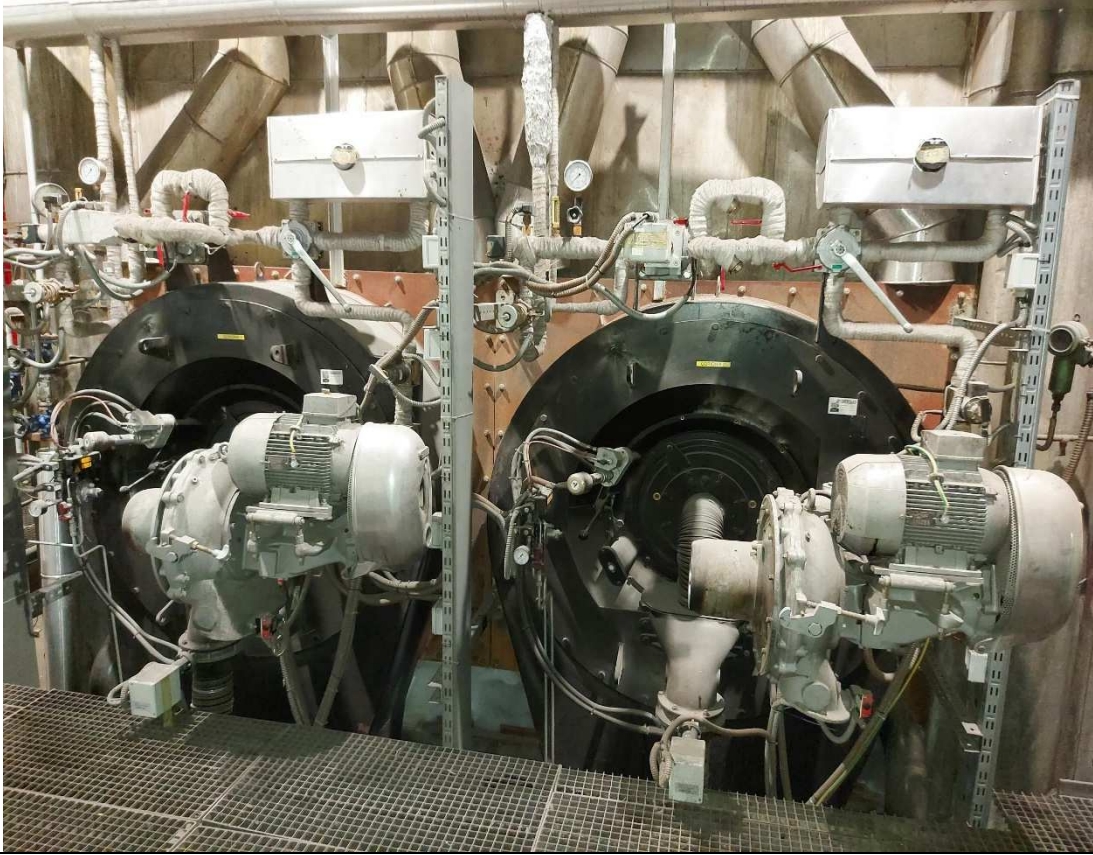
Machine: Transformator 6,3/0,4kV 1000kVA
Energoinvest typ HT 1000/6,3-0,4

Manufacturer: Končar

Year of construction: -

Quantity: 10 piece(s)

Article No 0090



Combined gas/oil burner

Technical specifications

Machine: Combined gas/oil burner SKVG 300
 $Q_{min} = 3,5MW$; $Q_{max} = 27MW$

Manufacturer: SAACKE

Year of construction: 2018

Quantity: 2 piece(s)

Article No 0091



Combined gas/oil burner

Technical specifications

Machine: Combined gas/oil burner SKVG 250
 $Q_{min} = 2,9MW$; $Q_{max} = 26MW$

Manufacturer: SAACKE Bremen

Year of construction: 2018

Quantity: 1 piece(s)

Article No 0092



Gas burner

Technical specifications

Machine: Gas burner RGMS 70/1-A
 $Q_{max} = 8,5\text{MW}$

Manufacturer: Weishaupt

Year of construction: 1993

Quantity: 2 piece(s)

Article No 0093



Centrifuges - sludge decanters

Technical specifications

Machine:	Sludge decanters
Manufacturer:	HILLER
TIP:	DP66 - 442
Dimensions:	
Drum diameter:	600 mm
Drum wall thickness	16 mm
Weight:	8500 kg
Year of construction:	2016.
Quantity:	2 pcs

Article No 0094



Sand filters for water

Technical specifications

Machine:	Sand filters
Manufacturer:	PARK TANKS
TIP:	RT – 6386 – F7ET
Dimensions:	
Materijal:	Plastic
Year of construction:	2016.
Quantity:	2 pcs

Article No 0095



Dosing unit for polimer

Technical specifications

Machine:

Dosing unit

Manufacturer:	ALEBRO
TIP:	DS – 2-5000 220 MX7
Dimensions:	
Materijal:	Plastic
Capacity:	2 x 5000 l/h
Year of construction:	2016.
Quantity:	1 pcs

Article No 0096



Crane

Technical specifications

Machine:	Crane
Manufacturer:	SPB inženjering
Transport capacity:	5 t
Dimensions:	Height 3100 , width 1700, Length 7000
Materijal:	Carbon steel,
Year of construction:	2016.
Quantity:	1 pcs

Article No 0097



Elevator for sugar

Technical specifications

Machine:	Elevator - belt
Capacity:	25t/h
Dimensions:	Height 19000 , width 1700, Length 7000
Materijal:	Carbon steel
Year of construction:	1990.
Quantity:	3 pcs

Article No 0098



Elevator for wet sugar

Technical specifications

Machine:	Elevator - chain
Capacity:	80 t/h
Dimensions:	Height 21000 , width 1800,
Materijal:	Carbon steel
Year of construction:	1979.
Quantity:	1 pcs

Article No 0099



Elevator for dry sugar

Technical specifications

Machine:	Elevator - belt
Capacity:	80 t/h
Dimensions:	Height 19000 , width 1800,
Materijal:	Carbon steel
Source of asset:	Croatian sugar industry - Osijek
Year of construction:	1990.
Quantity:	1 pcs

Article No 0100



Elevator

Technical specifications (mm)

	Height	Bucket width	Chain range	Belt width
Chain elevator	28500	520	620	
Chain elevator	10000	320	390	

Chain elevator	8000	320	390	
Chain elevator	16500	520	315	
Chain elevator	15000	520	315	
Chain elevator	18000	520	315	
Belt conveyor (2pcs)	18000	400		440
Belt conveyor (2pcs)	16500	400		440

Article No 0101



Tubular heat exchanger

Technical specifications

Tubular heat exchanger

No .	Function	Heating area (m ²)	Diametar Φ (mm)	Hight (mm)	Materijal
1.	Press water	200	1110	5500	Carbon steel
2.	Press water	200	1110	5500	Carbon steel
10.	Raw juice	200	1025	3400	Carbon steel
11.	Raw juice	250	1600	5900	Carbon steel
12.	Raw juice	300	1600	5900	Carbon steel
13.	Raw juice	300	1600	5900	Carbon steel
14.	Raw juice	200	1600	4100	Carbon steel
15.	Raw juice	250	1600	5900	Carbon steel
17.	Clear juice	200	1240	4450	Carbon steel
18.	Clear juice	200	1240	4450	Carbon steel
19.	Clear juice	150	1350	5000	Carbon steel
20.	Clear juice	150	1350	5000	Carbon steel
21.	Clear juice	150	1350	5000	Carbon steel
25.	Thin juice	300	1600	5900	Carbon steel
26.	Thin juice	300	1600	5900	Carbon steel

Article No 0102



Ventilators

Technical specifications

Ventilators

No.	Manufacturer	Typ	Capacity (m³/h)	Preasure (Pa)	Year	Pieces
1.	Vemos Zagreb	STVR-600 P 180	5040	1500	1988.	1
2.	Klima Celje	5Cv973	35000	2450	1995.	1
3.	Klima Celje	5CV9	35000	2450	1967.	1
4.	Minel Beograd	3CN-160	64800		1973	1
5.	Vemos Stupnik	NXVs-11,2RB12/c 105+EL	53280		1980	2
6.	Minel Beograd	5Cr112, form "r"	56520		1980	2
7.	Vemos Stupnik	NXVs-15,2RB10/c 105	85750		1980.	2

8.	Ventilator Zagreb	NXVDs-14,1 E66/56	85000		1980.	2
----	----------------------	----------------------	-------	--	-------	---

Article No 0103



Belt conveyors

Technical specifications

Belt conveyors			
No	Construction width (mm)	Conveyor length (mm)	Tape width (mm)
1.	1440	13000	1100
2.	1500	13000	1160
3.	1550	10000	1160
4.	1600	34000	1160
5.	1600	29000	1200
6.	1500	10000	1130
7.	1390	32000	1060
8.	1560	4200	1160
9.	1600	4700	1200
10.	1015	40000	750
11.	800	32000	530
12.	800	24000	530
13.	1600	134000	850
14.	1200	122000	640

15.	1150	51000	750
16.	1150	10000	800
17.	810	21000	550
18.	750	10000	540
19.	1000	5700	600
20.	850	21350	480
21.	850	5950	550
22.	850	5150	550
23.	850	18000	500
24.	750	12150	500
25.	800	24800	490
26.	880	24500	460
27.	900	10000	590
28.	870	15000	870
29.	1150	25000	840
30.	1140	11000	800
31.	1140	14800	800
32.	810	8200	600
33.	970	7400	650
34.	1090	21800	600
35.	880	7500	650
36.	750	6300	600
37.	800	7700	650
38.	930	123700	600
39.	1070	32500	790
40.	1280	28000	770
41.	1070	36000	640
42.	760	46000	550
43.	950	19000	650
44.	1160	12000	840
45.	910	9500	640
46.	1130	6000	800
47.	960	10000	640
48.	960	6500	500
49.	900	3500	600
50.	900	4300	650
51.	1530	21500	1200
52.	930	10000	620
53.	900	9500	550

Article No 0104



Screw conveyor

Technical specifications

Machine: typ PTK
L=20000mm, O=630mm, step=470mm, construction width: 875mm
n=52rpm; el.motor Nord 22kW

Manufacturer: Oprema Vrbovec

Year of construction: 2012

Quantity: 1 piece(s)

Article No 0105



Screw conveyor

Technical specifications

Machine: L=15000mm, fi=790mm, step=490mm, construction width: 970mm
el.motor 11kW
Q=300t/h

Manufacturer: Čelik Križevci

Year of construction: 1979

Quantity: 1 piece(s)

Article No 0106



Screw conveyor

Technical specifications

Machine: L=14000mm, fi=700mm, step=680mm, construction width: 990mm
el.motor 15kW
Q=300t/h

Manufacturer: Čelik Križevci

Year of construction: -

Quantity: 1 piece(s)

Article No 0107



Screw conveyor

Technical specifications

Machine: typ PT 800
L=13000mm, fi=780mm, step=500mm, construction width: 1000mm
el.motor 11kW
Q=300t/h

Manufacturer: Čelik Križevci

Year of construction: 1980

Quantity: 1 piece(s)

Article No 0108



Screw conveyor

Technical specifications

Machine: screw conveyor
Manufacturer: Čelik Križevci
Dimensions:

No.	Width (mm)	Hight (mm)	Lenght (mm)	Capacity (t/h)	Materijal
1.	1200	1280	25000	415	INOX
2.	1200	1100	8500	415	INOX
3.	1200	1100	13000	415	INOX

Year of construction: 2011.

Quantity: 3 pieces

Article No 0109



Screw conveyor

Technical specifications

Machine: screw conveyor
Manufacturer: Čelik Križevci
Dimensions:

No.	Width (mm)	Hight (mm)	Lenght (mm)	Capacity (t/h)	Materijal
1.	1200	1500	5000	125	Carbon steel
2.	1200	1500	5500	105	INOX
3.	1200	1500	5500	125	Carbon steel

Year of construction: 1998.
Quantity: 3 pieces

Article No 0110



Screw conveyor

Technical specifications

Machine: screw conveyor
Manufacturer: Briketstroj Valpovo
Dimensions:

No.	Width (mm)	Hight (mm)	Lenght (mm)	Capacity (t/h)	Materijal
1.	400	400	7000	10	INOX
2.	400	400	4000	10	Carbon steel
3.	400	400	7000	10	INOX

Year of construction: 2011.
Quantity: 3 pieces

Article No 0111



Screw conveyor

Technical specifications

Machine: screw conveyor
Manufacturer: Čelik Križevci
Dimensions:

No.	Width (mm)	Hight (mm)	Lenght (mm)	Capacity (t/h)	Materijal
1.	650	600	5000	150	Carbon steel
2.	650	600	4000	150	Carbon steel
3.	650	600	8500	150	Carbon steel

Year of construction: 1985.
Quantity: 3 pieces

Article No 0112



Screw conveyor

Technical specifications

Machine: screw conveyor
Manufacturer: Čelik Križevci
Dimensions:

No.	Width (mm)	Hight (mm)	Lenght (mm)	Capacity (t/h)	Materijal
1.	1000	900	11500	415	INOX
2.	1000	900	11500	415	INOX
3.	700	650	4000	80	INOX

Year of construction: 1985.
Quantity: 3 pieces

Article No 0113



Milling machine

Technical specifications

Machine:	Milling machine
Manufacturer:	INAS – Industrija alatnih strojeva
TYP:	GUK – 1P
General overhaul:	1998.
Year of construction:	1981.
Quantity:	1pcs

Article No 0114

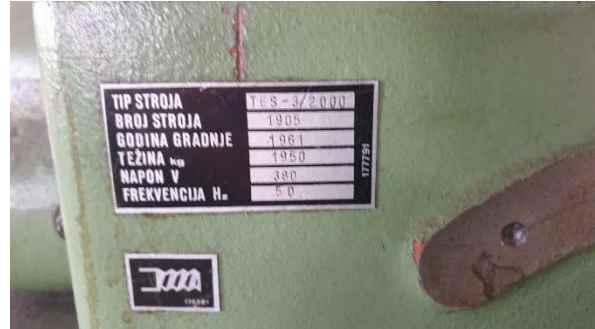


Lathe

Technical specifications

Machine:	Lathe
Manufacturer:	INAS – Industrija alatnih strojeva
TYP:	TES – 2 / 1500
General overhaul:	1997.
Year of construction:	1954.
Quantity:	1pcs

Article No 0115

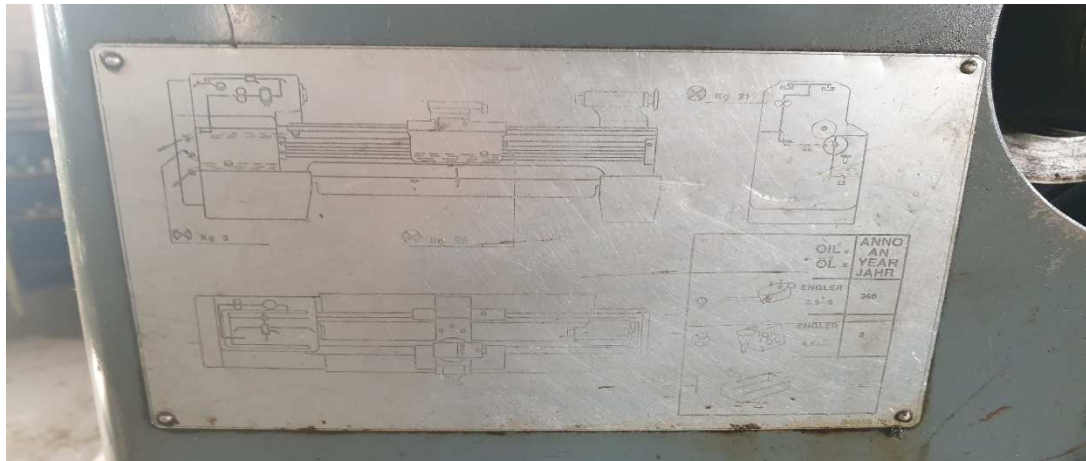


Lathe

Technical specifications

Machine:	Lathe
Manufacturer:	INAS – Industrija alatnih strojeva
TYP:	TES – 3 / 2000
Year of construction:	1961.
Quantity:	1pcs

Article No 0117



Lathe

Technical specifications

Machine:	Lathe
Manufacturer:	Potisje
TYP:	
Year of construction:	1988.
Quantity:	1pcs

Article No 0118



Hacksaw

Technical specifications

Machine:	Hacksaw
Manufacturer:	Pobeda _ Novi Sad
TYP:	HT 250
Year of construction:	1978.
Quantity:	1pcs

Article No 0119



Car scales

Technical specifications

Machine:	Car scales
Manufacturer:	Vage Zagreb
Measuring scale:	20000 – 50000 kg
Typ:	MJ 100
k Year of construction:	1985.
Quantity:	3 pieces

Article No 0120



Scales

Technical specifications

Machine: Scales

No:	Manufacturer:	Type:	Measuring scale:
1.	Vage Zagreb	MPE	20 - 500 kg
2.	Vage Zagreb	L116	150 kg
3.	Pfreundt	NK50BW2 - 2LZ	200 kg/m- belt scale
4.	Vage Zagreb	PB 8000	50 - 8100 g
5.	Mettler Toledo	DIGITOL - 30	20 - 500 kg
6.	Mettler Toledo	DIGITOL - 300	20 - 500 kg
7.	Vage Zagreb	MJ 100	> 50000 kg
8.	Vage Zagreb	MJ 200	> 50000 kg
9.	Mettler Toledo	SPIDER 1S	20 - 500 kg
10.	Bizerba	PLE	20 - 500 kg
11.	Mettler Toledo	PB 1502	0,5 - 1510 g
12.	Mettler Toledo	PB 8000	50 - 8100 g
13.	Bilanciali	EV-22	20 - 500 kg
14.	Mettler Toledo	SPIDER 1S	500 - 9000 kg
15.	SCHENCK	Intekont	80kg/m belt scale,3 pcs

Article No 0121



PUMPS

Technical specifications

PUMPS CIS - OSIJEK

No :	Manufacturer:	Construction:	Type:	Capacity m³/h	Lifting height (H)	Pcs:	Year of construction:
1.	Eloktrovina	Centrifugal multistage pump	VC 105 S	12.24 - 25.92	34 - 72	2	2010.
2.	Eloktrovina	Centrifugal multistage pump	VC 253 S-NP	10.8 - 20.88	22 - 47	2	2010.
3.	Eloktrovina	Centrifugal multistage pump	VC 55 T 3	1.8 - 5.4	30 - 55	2	2010.
4.	Sulzer	Centrifugal pump	A 31 - 125	500.4	68	3	2007.

5.	Sulzer	Centrifugal pump	A 11 - 32	5.04.	10	3	2007.
6.	Sulzer	Centrifugal pump	A 23 - 40	20.16	35	2	2007.
7.	Sulzer(Ahlstrom)	Centrifugal pump	APP 32 - 125	199.8	20	2	1998.
8.	Sulzer	Centrifugal pump	APP 32 - 125	252	25	4	2005.
9.	Sulzer	Centrifugal pump	APP 32 - 100	154.8	24	1	2006.
10.	Sulzer	Centrifugal pump	ASP23 - 50	35	20	1	
11.	Sulzer	Centrifugal pump	APP 21 - 80	152	40	1	
12.	Sulzer	Centrifugal pump	APP 33 - 125	200	40	1	
13.	Sulzer	Centrifugal pump	APP 44 - 150	400	50	1	
14.	Sulzer	Centrifugal pump	A 23 - 50	25.2.	40	1	2006.
15.	Sulzer	Centrifugal pump	A 43 - 350	1299	10	1	2007.
16.	Sulzer	Centrifugal pump	A 32 - 65	79.2	30	2	2006.
17.	Sulzer	Centrifugal pump	A 32 - 100	100	31	1	2013.
18.	Sulzer	Centrifugal pump	A 32 - 125	244.8	35	1	2007.
19.	Sulzer	Centrifugal pump	A 11 - 40	36	45	2	2007.
20.	Sulzer	Centrifugal pump	APP 32 - 125	306	35	2	2007.
21.	Sulzer	Centrifugal pump	APP 32 - 125	199.8	15	2	1998.
22.	Sulzer	Centrifugal pump	APP 33 - 100	130	45	2	2013.
23.	Sulzer	Centrifugal pump	A 33 - 80	50.4	50	2	2007.
24.	Sulzer	Centrifugal pump	A 21 - 80	144	28	4	2007.
25.	Sulzer	Centrifugal pump	A 33 - 100	151.2	45	2	2006.
26.	Sulzer	Centrifugal pump	A 32 - 100	129.6	35	1	2007.
27.	Sulzer	Centrifugal pump	A 32 - 100	180	30	1	2001.
28.	Sulzer	Centrifugal pump	A 33 - 80	50.4	50	2	2007.
29.	Sulzer	Centrifugal pump	ABS XFP100-CB1.4-PE60	155	18	2	2016.

30.	Sulzer	Centrifugal pump	A 22 - 50	50.4	70	1	2013.
31.	Sulzer	Centrifugal pump	A 42 - 20	1299	10	1	2007.
32.	Litostroj	Centrifugal pump	5 CN 6	381	52	2	1960.
33.	Litostroj	Centrifugal pump	5 CN 2	57.6	15.6.	3	1967.
34.	Litostroj	Centrifugal pump	OBD 70 - K	4620	9	3	1970/74/77.
35.	Litostroj	Centrifugal pump	7 CN 3	450	24.5.	1	1971.
36.	Litostroj	Centrifugal pump	5 CN 7	417.6	62	2	1981,.
37.	Litostroj	Centrifugal pump	4 CN 5	108	42.5	4	
38.	Litostroj	Centrifugal pump	5 CN 5	252	43.5	6	1968.
39.	Litostroj	Centrifugal pump	3 CN 5	57.6	40	3	
40.	Litostroj	Centrifugal pump	2 CN 5	31.32	47	2	
41.	Litostroj	Centrifugal pump	3 CN 3	24.12.	20	2	1951.
42.	Litostroj	Centrifugal pump	5 CN 5	245	45	1	1977.
43.	Litostroj	Centrifugal pump	2 CN 7	28.8.	73.5	2	1971.
44.	Litostroj	Centrifugal pump	6 CN 3	72	35	8	1970.
45.	Litostroj	Centrifugal pump	7 CN 5W-SS	775	35	1	
46.	Litostroj	Centrifugal pump	5 CN 3	154.8	24	3	
47.	Litostroj	Centrifugal pump	5 CN 2	57.6	16.7.	1	1971
48.	Litostroj	Centrifugal pump	3 CV 2 - 1	7.2.	84	1	1967.
49.	Andritz	Centrifugal pump	S 3-150-400 DD	300	35	2	2011.
50.	Andritz	Centrifugal pump	S 3 - 200 - 380 CD	450	35	2	2011.
51.	Andritz	Centrifugal pump	S 3 - 125 -350 CD	150	30	3	2011.
52.	Andritz	Centrifugal pump	S 3 - 200 - 380 CD	450	30	2	2011
53.	Andritz	Centrifugal pump	SD 80 x 50 315 C	150	30	1	2011.
54.	Andritz	Centrifugal pump	ES 32 - 200.2 / A	30	60	2	2017.

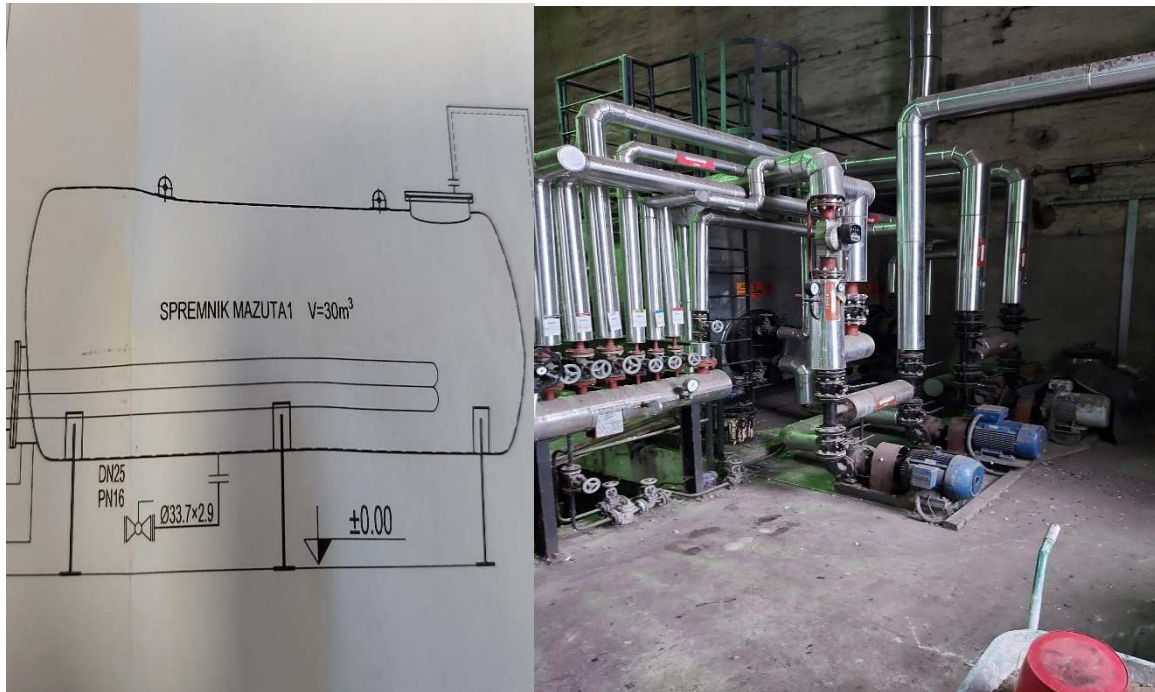
55.	Andritz	Centrifugal pump	S 100 - 250 2/A	150	20	2	2016.
56.	Andritz	Centrifugal pump	ES 100 - 315.2 / A	200	30	2	2017.
57.	Andritz	Centrifugal pump	ACP 250 - 315.6 CD	810	20	3	2016.
58.	Andritz	Centrifugal pump	ACP 250 - 315.3 CD	760	30	1	2016.
59.	Andritz	Centrifugal pump	ACP 200 - 400.5 CD	760	30	2	2016.
60.	Andritz	Centrifugal pump	ACP 100 - 250.5 CD	170	30	2	2016.
61.	Andritz	Centrifugal pump	ES 40 - 160.2 / A	50	30	3	2017.
62.	Andritz	Centrifugal pump	ES 50 - 200.2 / A	60	60	2	2017.
63.	Andritz	Centrifugal pump	S 3 - 80 - 265 CD	100	60	1	2012.
64.	Croatia pumpe	Centrifugal pump	RPP 20 - 4	5.4.	40	1	2004.
65.	Croatia pumpe	Centrifugal pump	KK 50 - 20	381.6	52	2	2004.
66.	Jugoturbina(Croatia pumpe)	Centrifugal pump	CP 64	150 - 180	42	1	
67.	Jugoturbina(Croatia pumpe)	Centrifugal pump	NN 40 - 250	50.04	70	2	1989.
68.	Jastrebac	Centrifugal pump	DREN - 2	Tlačna cijev 2"		2	
69.	Jastrebac	Centrifugal pump	FH - 3	36 - 78	18 - 20	3	
70.	Jastrebac	Centrifugal pump	HCPA 150 - 400	252	45	2	1979.
71.	Jastrebac	Centrifugal pump	MP - 1				
72.	Jastrebac	Centrifugal pump	CVNR 6 - 3	90 - 120	80 - 120	1	
73.	Jastrebac	Centrifugal pump	CVN 1 - 2	4.8 - 9.6	16 - 24	1	
74.	Jastrebac	Centrifugal pump	Vijčana	Prirubnice DN 125 PN 8		2	
75.	Simans	Centrifugal pump	LP 650	3300	9	2	1965
77.	Warman	Centrifugal pump	EAH 6 - 4	144 - 432	55	2	
78.	Warman	Centrifugal pump	AH 6 - 4	144 - 432	55	2	
79.	Warman	Vertical pump	150 SV - SP	400	20.lip	1	2010

80.	Warman	Vertical pump	250 TV - SP	1000	24.4.	3	2017.
81.	Warman	Centrifugal pump				1	
82.	Ganz	Centrifugal pump	CHW 600	900	4	1	2006.
83.	Ganz	Centrifugal pump	MLS 350 A	799.2	30	3	
84.	Elro	Peristaltic pump	IP 100	0.188	100	5	2010.
85.	Elro	Peristaltic pump	10 SNB - TWGDQA	0.188	20 - 40	3	2008.
86.	Clena	Piston pump	HC 940	1.53 - 1.8	2000	1	2014.
87.	Đuro Đaković	Centrifugal pump	SK 65 BS	31.2	23	2	1960.
88.	Boerger	Lobe pump	PL 200	15	72.	1	2012.
89.	Boerger	Lobe pump	AL 50	5	40	2	2014.
90.	Boerger	Lobe pump	FL 518	25	60	3	2012.
91.	Boerger	Lobe pump	FL 776	75	40	1	2019.
92.	Boerger	Lobe pump	FL 776	40	60	2	2012.
93.	Boerger	Lobe pump	FL 518	25	60	1	2015.
94.	Boerger	Lobe pump	FL 518	40	35	2	2013.
95.	Boerger	Lobe pump	FL 518	max. 15	60	3	2011.
96.	Boerger	Lobe pump	EL 1550	max 60	60	3	2012.
97.	KSB	Centrifugal multistage pump	KSB MTCD 10B0-3110656	15	384	2	2002./2006.
98.	Netzsch	Screw pump	NNM038BY01L06 B	0.5 - 5	4.6.	2	2016.
99.	Netzsch	Screw pump	NM106SY	12-90.	2	2	2016.
100.	Crane	Centrifugal pump	DL25-PM-EEE	Prirubnice DN 25 PN 4	70	1	2006.
101.	Crane	Centrifugal pump	DL40-PM-EEE	Prirubnice DN 40 PN 4	70	1	2006.
102.	Homa	Peristaltic pump	V 1337 - T 72	82.1	31.2	2	2014.
103.	Duwar	Piston pump	DPA 001	3	40	1	
104.	Duwar	Piston pump	DPA 001	0.45	300	1	
105.	Duwar	Piston pump	DPA 003	0.04	200	5	
106.	Panndorf	Peristaltic pump	3 - P CLLASIC 10	0.130	20	2	2010.

107.	Bran -Luebbe	Dosing pump	DS - 50	50	100	18	2010/2015/2018
108.	Bran -Luebbe	Dosing pump	DS - 50	17.5.	100	2	2019.
109.	Promiment	Dosing pump	Beta / 4	7.1.	70	2	
110.	Promiment	Dosing pump	VMACO4063PC000M00	64	40	1	
111.	Promiment	Dosing pump	Gama 5	17.4.	35	1	
112.	LMS	Centrifugal pump	350 470.3 ESR7M1L4	750	45	3	2008.
113.	Woma	Piston pump	1502 P 26	4.44.	7500	1	2011.
114.	Hammelmann	Piston pump	9.001.121.085	3.9.	8000	1	1989.
115.	AG	Centrifugal pump	TPS 17000	17	10	2	
116.	Wangen	Screw pump	KL50S 110.0 V2A	max.50	max.40	2	2016.
117.	DP pamps	Centrifugal pump	DPVS 4/14 B	3.9.	101.3	2	2013.
118.	Willo	Centrifugal pump	IL 100/390-30/4	120		4	2016
119.	KSB Frankenthal	Centrifugal pump	HDA 80/8	80t/h	55at p	3	1974
120.	KSB Frankenthal	Centrifugal pump	HDA 80/9	80t/h	55at p	1	1974
121.	Tvornica pumpi Karlovac	Centrifugal pump	NN 50-250	22,2l/s ek	48,4	1	2009
122.	Tvornica pumpi Karlovac	Centrifugal pump	NN 80-250	35l/sek	50	1	2009
123.	Tvornica pumpi Karlovac	Centrifugal pump	NN 80-200	35l/sek	50	2	2014
124.	KSB	Centrifugal pump	HAD 80/8	100t/h		1	2014
125.	KSB	Centrifugal pump	HAD 80/8	100t/h		1	2014
126.	Jugoturbina(Croatia pumpe)	Centrifugal pump	NN 65-250	22,2l/s ek	65	1	1990
127.	Tvornica pumpi Karlovac	Centrifugal pump	NN 50-250	19,3l/s ek	50	1	1990
128.	Tvornica pumpi Karlovac	Centrifugal pump	VSV 19-5/4	6l/sek	160	2	1997/2010
129.		Centrifugal pump	PZG-65			1	1976

13 0.		Centrifugal pump	HVP-50	54		1	1976
13 1.	Jastrebac Niš	Centrifugal pump	SCP 40 250	8,3l/sek	70	2	1988
13 2.	Jastrebac Niš	Centrifugal pump	HCP 40 200	4,6- 9,7l/sek	58- 50	2	1988
13 3.	Finish Thompson	Piston pump	SP15P-E-FF-94			2	2018
13 4.	Finish Thompson	Piston pump	SP22P-E-3X2-35			1	2020

Article No 0122



Oil station

Technical specifications

Machine: 2 pieces - oil tank V=30m³ (50t)
2 pieces pump PZG-65; 720rpm; motor 7,5kW
2 pieces pump HVP-50; Q=54m³/h; 14600rpm; motor 18,5kW (1976)

Year of construction: 2017

Quantity: 1 piece(s)